

PRODUCT INFO:

Installation type:	Street light, wall mounted, pole mounted
Environments:	Urban landscape, street lighting
Mounting type:	Surface
Mounting note:	Installation with quick connector IP67 integrated. Pole and pole mounting joint are accessories to be ordered separately.
Body:	Housing made of extruded aluminium powder-coated. Die-Cast aluminum end caps painted in the same colour as the housing.
Painting:	Polyester powder coating, with a pluri-processed against corrosion (passed the exposure of over 1500 hours in a saline mist environment).
Screws:	AISI 304 stainless steel screws.
Standard Colour:	GR graphite satin finish.

DIMENSIONS:

Total device height: (mm)	52(2.04")
Total device width: (mm)	200(7.87")
Total device length: (mm)	500(19.68")

OPTICAL:

Optical System:	SLED optical system with secondary lenses in PMMA, PC protection diffuser with surface treatment scratch-resistant and anti-aging UV rays.
Beam:	Road asymmetrical for model : D67/CE2-LWN-2RA-GR / D67/CE2-LWW-2RA-GR Asymmetrical for model : D67/CE2-LWN-2AS-GR / D67/CE2-LWW-2AS-GR
Emission:	Direct
Adjustable:	No

LIGHTING SOURCE for model D67/CE2-LWN-2RA-GR

MacAdam:	Step 2
Output Flux:	3818 lm
Source:	LED
Source type:	SLED SQUARE
System power:	43W
Temperature colour:	4000K CRI>80

LIGHTING SOURCE for model D67/CE2-LWW-2RA-GR

MacAdam:	Step 2
Output Flux:	3569 lm
Source:	LED
Source type:	SLED SQUARE
System power:	43W
Temperature colour:	3000K CRI>80

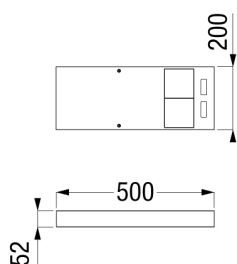
LIGHTING SOURCE for model D67/CE2-LWN-2AS-GR

MacAdam:	Step 2
Output Flux:	3818 lm
Source:	LED
Source type:	SLED SQUARE
System power:	43W
Temperature colour:	4000K CRI>80

LIGHTING SOURCE for model D67/CE2-LWW-2AS-GR

MacAdam:	Step 2
Output Flux:	3569 lm
Source:	LED
Source type:	SLED SQUARE
System power:	43W
Temperature colour:	3000K CRI>80

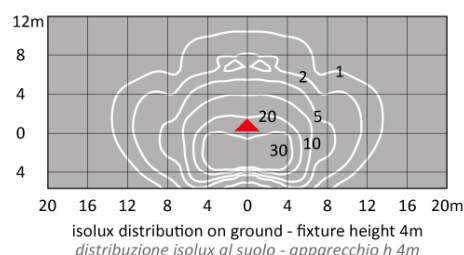
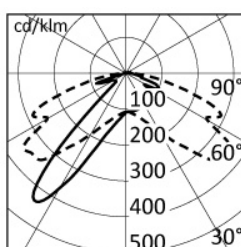




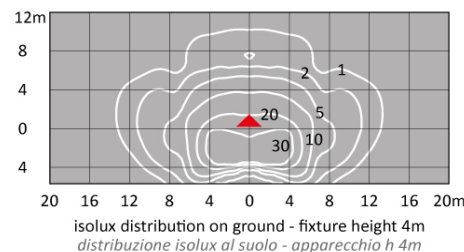
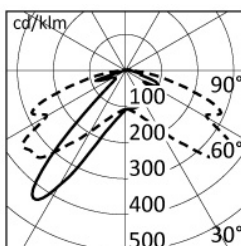
ELECTRICAL:

Ballast type:	ON-OFF, mains voltage spikes protection up to 4KV. Automatic night power reduction upon request.
Frequency:	50-60Hz
Lifetime:	50.000h L80B10 (Ta =25°C)
Line input:	Use only (EN 60598-1) a two core H07RN-F rubber cable with diameter between 7,5 and 12mm.
Mounting ballast type:	Integral
Voltage:	110-277V
Separate ignition:	No
Emergency 1E:	No
Emergency 3E:	No

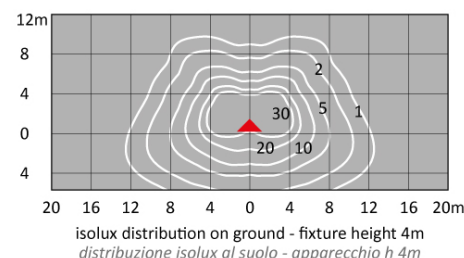
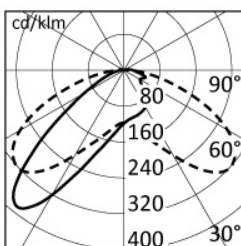
PHOTOMETRICS for model D67/CE2-LWN-2RA-GR



PHOTOMETRICS for model D67/CE2-LWW-2RA-GR



PHOTOMETRICS for models D67/CE2-LWN-2AS-GR and D67/CE2-LWW-2AS-GR





OPTIONAL ACCESORIES:

POLE:

8PCA4060A531V-GR

Conical straight pole Ø60mm, height above ground level 4m. Complete with shunt terminal block, inspection door and top cap. Hot zinc coated and painted. -GR GRAPHITE.

8PCA6060C831V-GR

Conical straight pole Ø60mm, height above ground level 6m. Complete with shunt terminal block, inspection door and top cap. Hot zinc coated and painted. -GR GRAPHITE.

8PCA8060E831V-GR

Conical straight pole Ø60mm, height above ground level 8m. Complete with shunt terminal block, inspection door and top cap. Hot zinc coated and painted. -GR GRAPHITE.

8PRA50608931V-GR

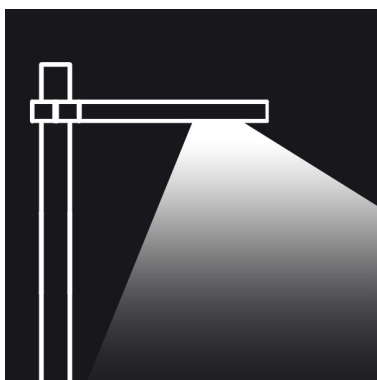
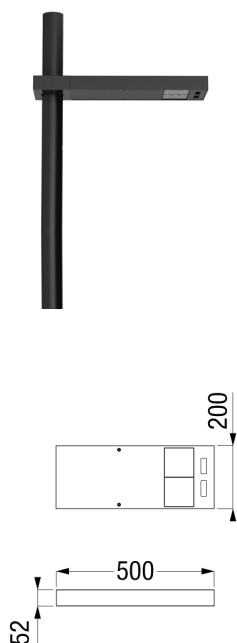
Tapered straight pole Ø60mm, height above ground level 5m. Complete with shunt terminal block, inspection door and top cap. Hot zinc coated and painted. -GR GRAPHITE.

8PRA7060C731V-GR

Tapered straight pole Ø60mm, height above ground level 7m. Complete with shunt terminal block, inspection door and top cap. Hot zinc coated and painted. -GR GRAPHITE.

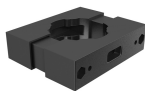
8PTA40608931V-GR

Cylindrical straight pole with tang Ø60mm, height above ground level 4m. Complete with shunt terminal block, inspection door and top cap. Hot zinc coated and painted. -GR GRAPHITE.



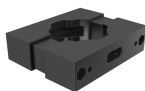
D67/B-GR

Adjustable fixing base, for all wall mounted Tema City fixtures on pole connection for conical or cylindrical poles, and for rectangular pole at half-height (D67/PID ..., D67/PPD ...). It allows the ±15° inclination of the luminaire. -GR GRAPHITE



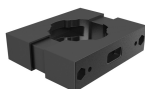
D67/GA1-GR

Pole connection. Suitable for one fixture Tema City on conical or cylindrical poles with diameters 76 or 102mm. Powder painting after passivation -GR GRAPHITE. AISI 304 stainless steel hardware.



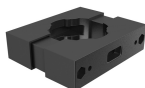
D67/GA2-GR

Pole connection. Suitable for two fixtures Tema City on conical or cylindrical poles with diameters 76 or 102mm. Powder painting after passivation -GR GRAPHITE. AISI 304 stainless steel hardware.



D67/GA3-GR

Pole connection. Suitable for one fixture Tema City on conical or cylindrical poles with diameters between 60 and 63mm. Powder painting after passivation -GR GRAPHITE. AISI 304 stainless steel hardware.



D67/GA4-GR

Pole connection. Suitable for two fixtures Tema City on conical or cylindrical poles with diameters between 60 and 63mm. Powder painting after passivation -GR GRAPHITE. AISI 304 stainless steel hardware.

OPTICAL:

D67/SL-GR

Squared anti-glare louver for each pair of SLED -GR GRAPHITE.

