

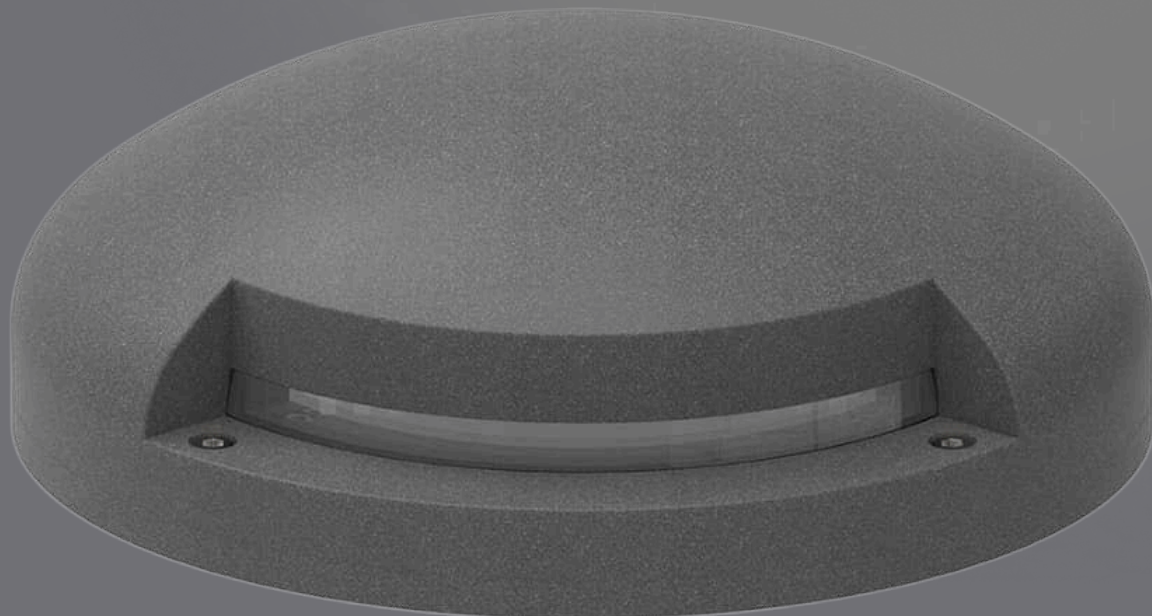
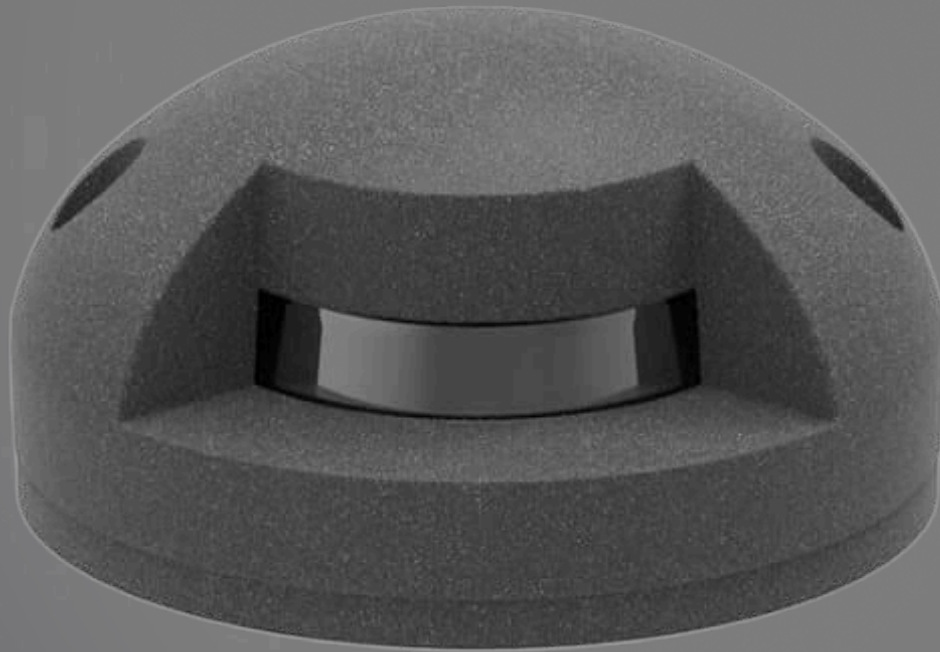
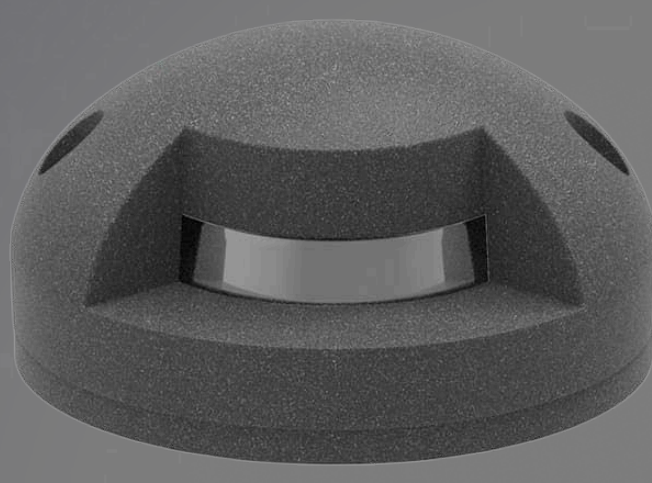


**BULLARD  
BOLLARDS**  
Think Bollard Think Bullard

# BUNNY GLOW 1L FLAT

INSTALLATION TYPE:  
RECESSED

LED



INSTALLATION INSTRUCTION

02/11/2026



**BULLARD  
BOLLARDS**  
Think Bollard Think Bullard

BUNNY GLOW 1L FLAT

02/11/2026

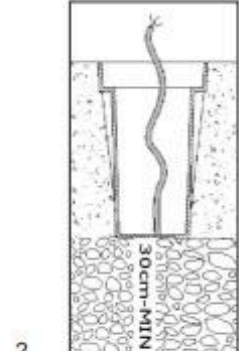
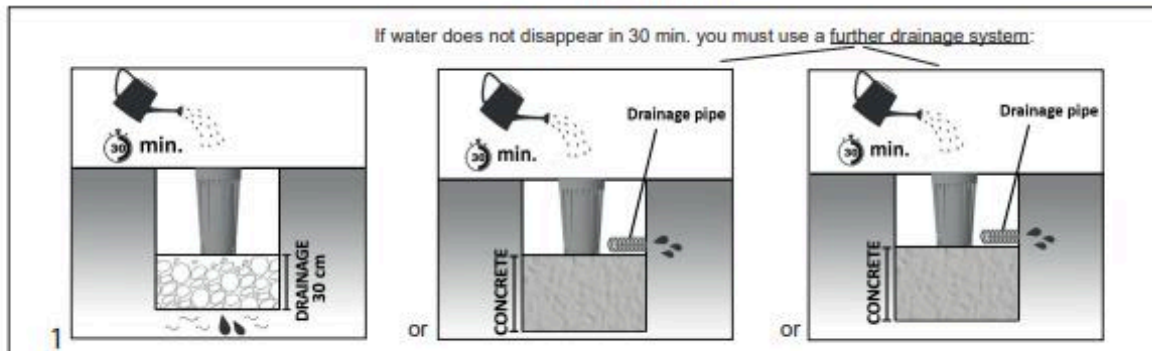
IP68



Class I  
EAC  
CE

## DRENAGGIO / DRAINAGE

If water does not disappear in 30 min. you must use a further drainage system:



Fissare a terra il cestello con cemento, avendo cura di tenerlo allineato ed a filo pavimento.  
Garantire un buon drenaggio nella zona sottostante la lampada (almeno 30 cm.)

The main sleeve should be flush mounted into the ground leveling the top of the body with the ground; the unit should be then concreted. The bottom of the sleeve must have at least 30 cm drainage.

Visser le kit de scellement dans le béton, ayant soin de l'aligner correctement au niveau du sol, assurer un drainage approprié au fond du luminaire (30 cm.)

Die Einbaudose korrekt abgefluchtet mit dem Boden einbetonieren, die geeignete Entwässerung unter dem Gerät zusichern

Fijar la caja al suelo con cemento, teniendo cuidado de mantenerla alineada y a ras del suelo. Asegurar un buen drenaje de la zona situada debajo de la lámpara (al menos 30 cm.)

CE iSTR0236\_Rev:0

P. 2

[sales@gordonbullard.com](mailto:sales@gordonbullard.com)  
[www.bullardbollards.com](http://www.bullardbollards.com)  
1 877-964-4646



991 South Gull Lake Dr.  
Richland, MI 49083  
USA

Due to the dynamic nature of lighting products and the associated technologies, luminaire data on all specification sheets is subject to change at the discretion of Gordon Bullard LLC and associated companies.

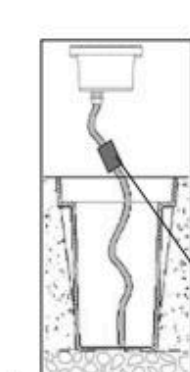
© Bullard & Comany 2024 All Rights Reserved



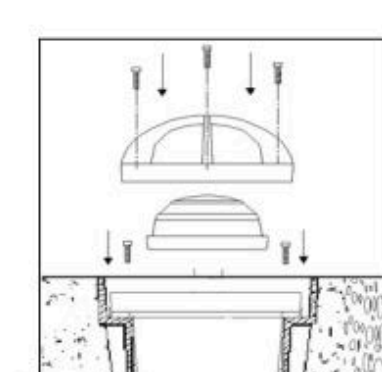
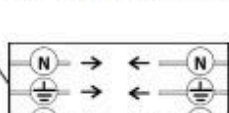
**BULLARD  
BOLLARDS**  
Think Bollard Think Bullard

BUNNY GLOW 1L FLAT

02/11/2026



Realizzare una connessione elettrica con tenuta stagna IP67.  
Make the electrical junction for waterproof IP67.  
Faire la connexion électrique avec étanchéité IP67.  
Der elektrische Anschluss mit wasserdichten IP67.  
La conexión eléctrica con IP67 resistente al agua.



Bloccare il tutto con le viti in dotazione, serrando completamente. Assicurarsi che vi siano i requisiti minimi di sicurezza.  
Block using the screws supplied tightening completely. Make sure the minimum safety requirements are assured.  
Bloquer le tout à l'aide des vis fournies à cet effet, serrant complètement. S'assurer que les conditions de sécurité nécessaires sont réunies.  
Mitgelieferten Schrauben befestigen, vollständig festziehen. Sicherstellen, dass die Mindestsicherheitsanforderungen gewährleistet sind.  
Sujetarlo todo con los tornillos específicos suministrados, apretando completamente. Asegurarse de que se cumplan los requisitos mínimos de seguridad.

3

4

P. 3

[sales@gordonbullard.com](mailto:sales@gordonbullard.com)  
[www.bullardbollards.com](http://www.bullardbollards.com)  
1 877-964-4646



991 South Gull Lake Dr.  
Richland, MI 49083  
USA

Due to the dynamic nature of lighting products and the associated technologies, luminaire data on all specification sheets is subject to change at the discretion of Gordon Bullard LLC and associated companies.

© Bullard & Comany 2024 All Rights Reserved