



**BULLARD**  
BOLLARDS



## WARE Bollard

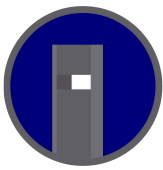
---

sales@gordonbullard.com  
www.bullardbollards.com  
1-877-964-4646



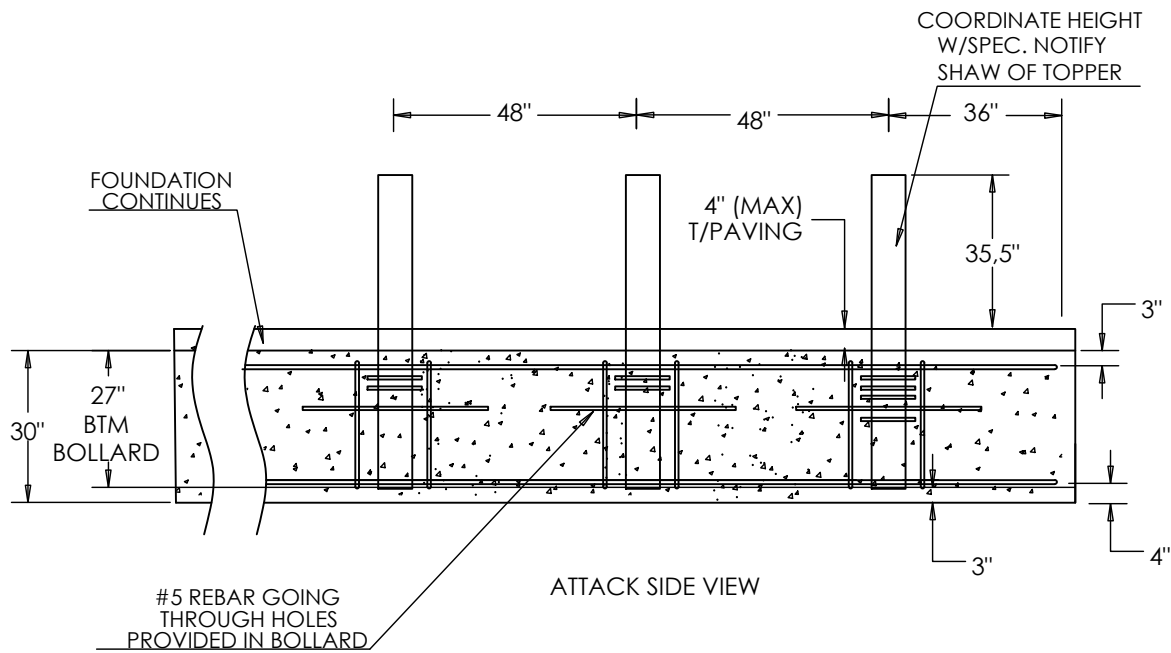
---

991 South Gull Lake Dr  
Richland, MI 49083  
USA

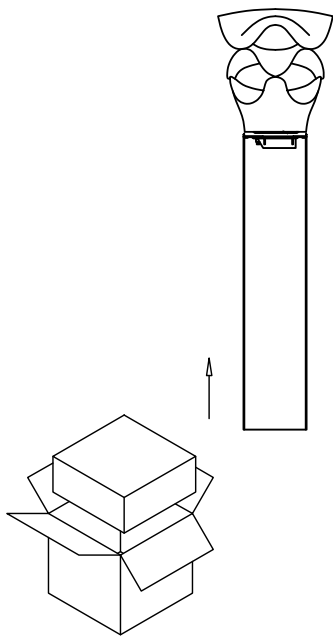


### 1. Mounting of security base in accordance with ASTM CRASH RATED standards

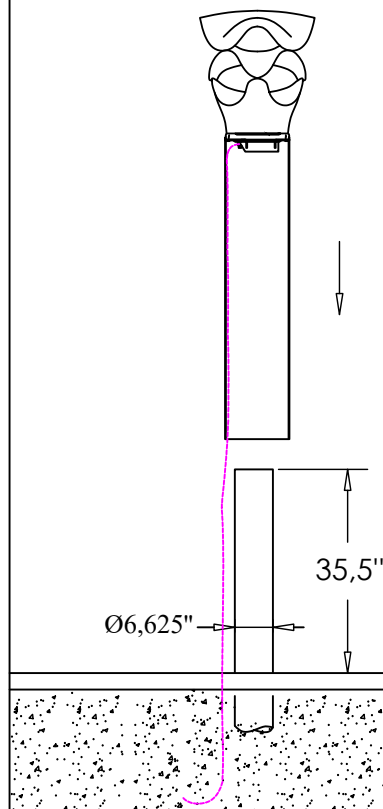
Detailed installation information on page 4,5 and 6



2. Take out the lamps and find the corresponding accessories.



3. Connect the power cord through the three-core waterproof connector  
4. Fix the lamp on the embedded ground cage.



5. Lamp size drawing.

