



**BULLARD
BOLLARDS**
Think Bullard Think Bullard

THE SPOONBILL

Park/Urban/Garden Pole Luminaires





FIXTURE TYPE: _____

PROJECT NAME: _____

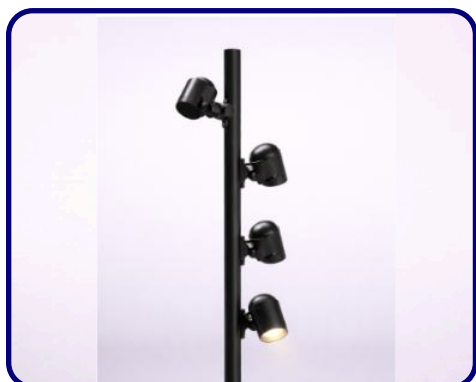
-BOBTC0269



-BOBTC369



-BOBTC469



GENERAL INFORMATION:

THE SPOONBILL by Bullard Outdoor blends architectural presence with dependable outdoor performance. Defined by a tall, minimal pole and adjustable cylindrical spotlight heads, its clean, utilitarian design is ideal for parking areas, plazas, pathways, and large-scale architectural exteriors. The multi-head configuration allows for targeted illumination across wide outdoor spaces.

Constructed from die-cast aluminum with a durable powder-coated finish, THE SPOONBILL is engineered for long-term outdoor use with excellent corrosion resistance. It features efficient LED lighting delivering controlled, focused light with a CRI of 80. Designed to operate on 110–277V, it offers reliable protection with an IP65 weather rating and IK07 impact resistance. Available in sanded black and dark gray finishes.

FIXTURE TYPE:

Urban Pole Luminaires

LIGHTING

LED



VOLTAGE:

110-277V



MATERIAL:

Die-casting aluminum finishing

LENS:

B71

CRI:

80

IP RATING:

IP 65



IK RATING:

IK 07

BUILT FOR THE STORM

sales@gordonbullard.com
www.bullardoutdoor.com
1-877-964-4646



991 South Gull Lake Dr
Richland, MI 49083
USA



FIXTURE TYPE: _____

PROJECT NAME: _____

NOTES:

-BOBTC0269



-BOBTC369



-BOBTC469



LED **IP65**

HOW TO ORDER:

CODE:

Example:
CODE: BB-ST-KPG-PL-BOBTC0269-K30-KAP7037-DIM-B15-A1-IB

BB-ST-KPG-PL-BOBTC0269-
K30-KAP7037-DIM-B15-
A1-IB

1 MODELS:

CODE-BOBTC0269

DIMENSIONS:

Pole Diameter - Ø: 3.15" (8 cm)
Height - H: 118.11" (300 cm)

LIGHT SOURCE:

LED / 90 W / 378 mA / 8845 lm / 110-277V

CODE -BOBTC369

DIMENSIONS:

Pole Diameter - Ø: 3.15" (8 cm)
Height - H: 157.5" (400 cm)

LIGHT SOURCE:

LED / 120 W / 504 mA / 11260 lm / 110-277V

CODE -BOBTC469

DIMENSIONS:

Pole Diameter - Ø: 3.54" (9 cm)
Height - H: 157.5" (400 cm)

LIGHT SOURCE:

LED / 120 W / 504 mA / 11260 lm / 110-277V

2 CCT OPTIONS:

-K30 3000K
-CUS Custom on request*

3 FINISH OPTIONS:

-KAP7037 Sanded Dark Gray
-RAL9005 Sanded Black

4 DIMMING OPTIONS:

-DIM 1-10V
-PWM Pulse Width Modulation
-DALI DALI (Digital Addressable Lighting Interface)

sales@gordonbullard.com
www.bullardoutdoor.com
1-877-964-4646



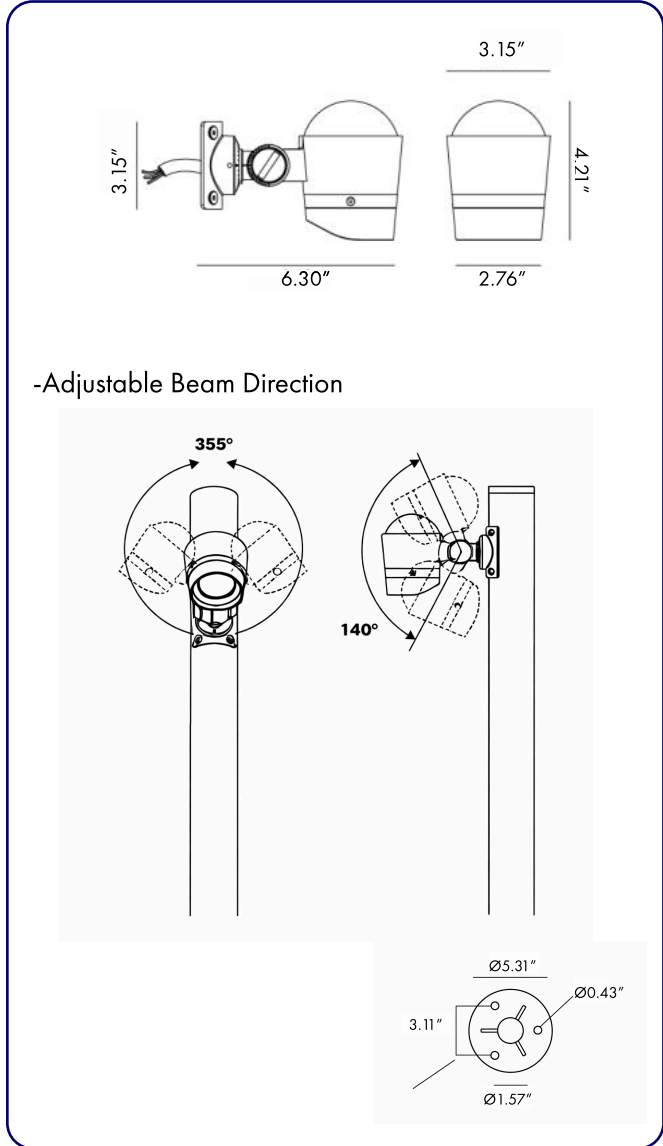
991 South Gull Lake Dr
Richland, MI 49083
USA



FIXTURE TYPE: _____

PROJECT NAME: _____

NOTES:



HOW TO ORDER:

CODE:

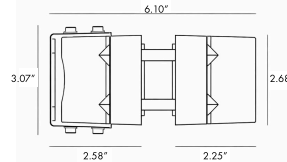
Example:
CODE: BB-ST-KPG-PL-B0BTC0269-K30-KAP7037-DIM-B15-A1-IB

BB-ST-KPG-PL-B0BTC0269-
K30-KAP7037-DIM-B15-
A1-IB

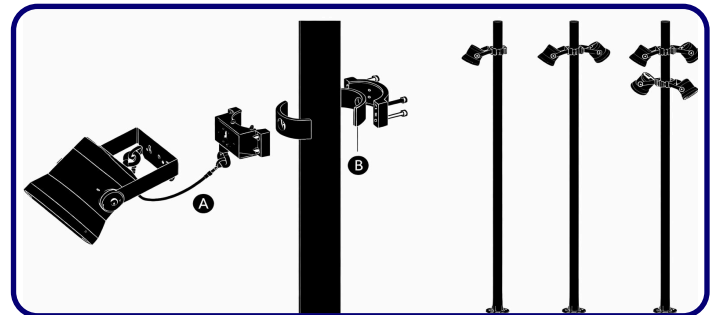
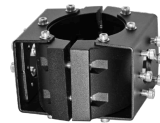
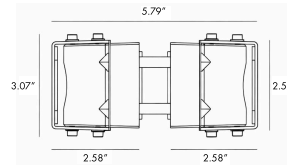
- 5 BEAM**
- B15 15°
 - B24 24°
 - B45 45°
 - B60 60°

6 ACCESSORIES

-A1 One side - BO-RP001-KPG-BL



-A2 Two sides - BO-RP002-KPG-BL



Technical drawing of the bollard fixture base with dimensions: Ø0.88" (width), Ø0.31" (hole diameter), 0.87" (height), and Ø1.26" (width). Callouts A, B, and M5 are shown.

- 1 Compatible with all brands and models.
- 2 Safety hook(s) included (see A of image 1)
- 3 Two sizes of rubber gaskets included (see B of image 1) which can be selected based on the diameter of the installing pole. Please refer to the manual for details.
- 4 All stainless steel 304# screws

sales@gordonbullard.com
www.bullardoutdoor.com
1-877-964-4646



991 South Gull Lake Dr
Richland, MI 49083
USA

