

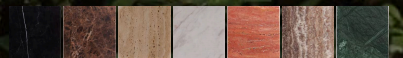


**BULLARD  
BOLLARDS**  
Think Bollard Think Bullard



# MR. RED TRAVERTINE

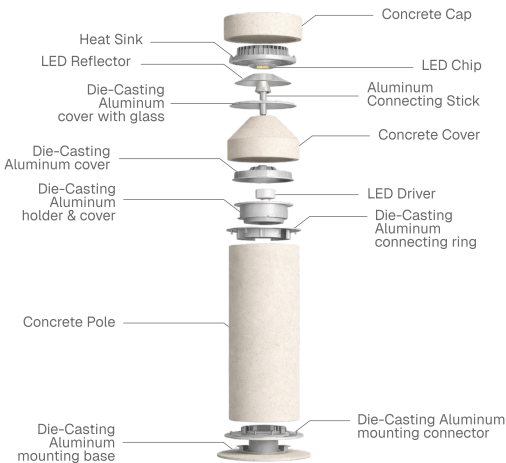
Bollard



Fixture Type:

Project Name:

Notes:



**General Information:**

Mr. Red Travertine is crafted from solid natural travertine marble, this luminaire combines the timeless character of natural stone with contemporary minimalist design. The result is a refined outdoor lighting element that balances rustic materiality with modern architectural aesthetics.

Equipped with energy-efficient LED technology and adjustable color temperature, the fixture provides reliable performance while creating a comfortable and controlled lighting atmosphere.

Designed for the illumination of pathways, squares, and entrance areas, the bollard distributes light evenly around its structure. The multi-layer 360° illumination design creates a dynamic visual effect, where layered light replaces traditional glare to produce a soft, immersive glow.

The luminaire is available in two sizes with overall heights of 23.2" and 40.9". The 20W LED bollard can be controlled through standard on/off switching or integrated into advanced lighting systems via DALI control.

**Voltage:**

110-277V

**Material:**

MARBLE, DIE-CASTING ALUMINUM, SAFETY GLASS

**Lighting:**

LED

**IP Rating:**

IP 65

**IK Rating:**

IK 08

**Appliance Class:**

I



Due to the dynamic nature of lighting products and the associated technologies, luminaire data on all specification sheets is subject to change at the discretion of Gordon Bullard LLC and associated companies.

**THINK BOLLARD - THINK BULLARD**

[sales@gordonbullard.com](mailto:sales@gordonbullard.com) / [www.bullardbollards.com](http://www.bullardbollards.com) / 1-877-964-4646

991 South Gull Lake Dr Richland, MI 49083 USA

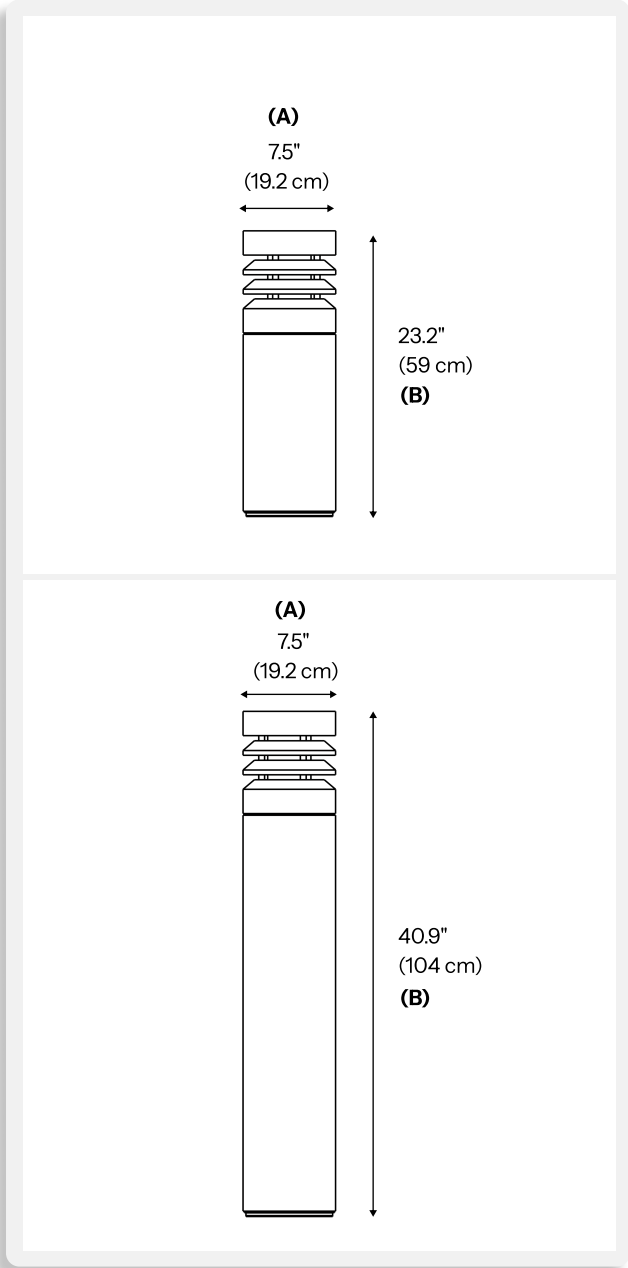


**BULLARD  
BOLLARDS**  
Think Bullard Think Bullard

**CODE:  
BB-7172-ML**

Fixture Type:

Project Name:



HOW TO ORDER:

CODE:

**Example:  
CODE: BB-7172-ML-S-K27-RT-NON**

**BB-7172-ML-S-  
K27-RT-NON**

**1 Models:**

**-S**

A) Diameter - Ø: 7.5" (19.2 cm)  
B) Height - H: 23.2" (59 cm)

**LIGHT SOURCE:**

SMD LED | 20W | 195 lumens

**WEIGHT:**

50.7 lb

**-M**

A) Diameter - Ø: 7.5" (19.2 cm)  
B) Height - H: 40.9" (104 cm)

**LIGHT SOURCE:**

SMD LED | 20W | 195 lumens

**WEIGHT:**

103.6 lb



Due to the dynamic nature of lighting products and the associated technologies, luminaire data on all specification sheets is subject to change at the discretion of Gordon Bullard LLC and associated companies.

**THINK BOLLARD - THINK BULLARD**

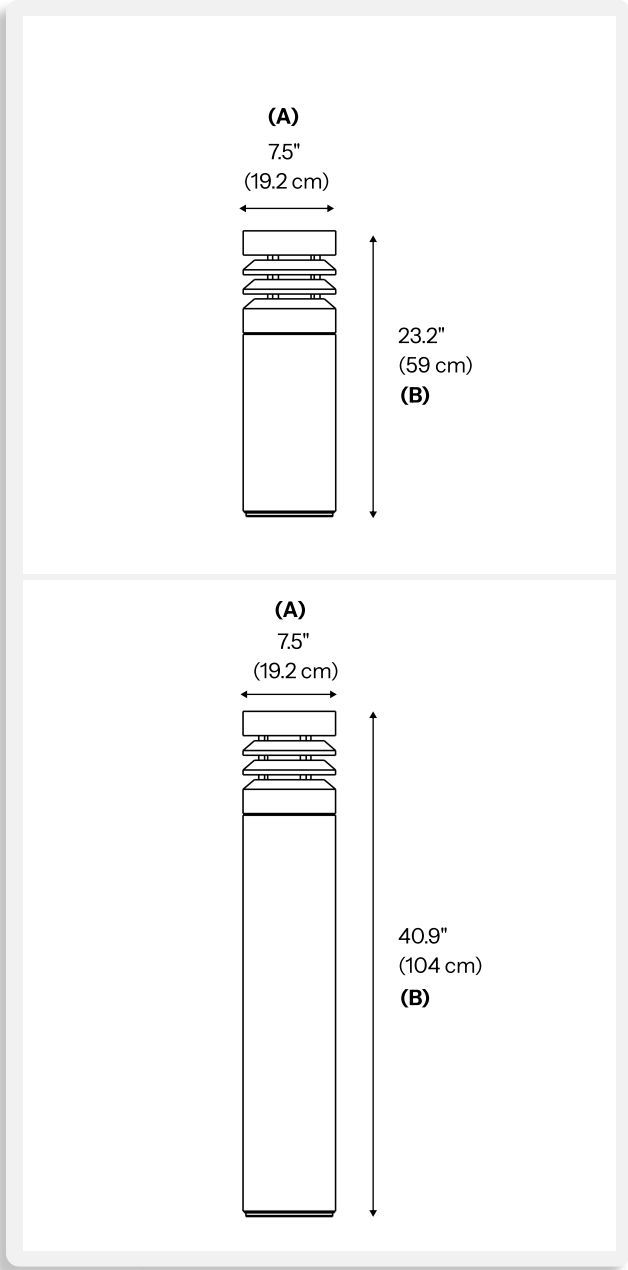
[sales@gordonbullard.com](mailto:sales@gordonbullard.com) / [www.bullardbollards.com](http://www.bullardbollards.com) / 1-877-964-4646

991 South Gull Lake Dr Richland, MI 49083 USA



Fixture Type:

Project Name:



HOW TO ORDER:  CODE:

**Example:**  
**CODE: BB-7172-ML-S-K27-RT-NON**

**BB-7127-ML-S-  
K27-RT-NON**

**2** CCT:

- K27** 2700K
- K30** 3000K
- K40** 4000K

**3** Finish Options:

- IG** Indian Green
- ST** Silver Travertine
- RT** Red Travertine
- BM** Black Marquina
- T** Travertine
- DE** Dark Emperador
- VW** Volakos White

**4** Dimming Options:

- NON** NON-Dimmable
- DALI** DALI



Due to the dynamic nature of lighting products and the associated technologies, luminaire data on all specification sheets is subject to change at the discretion of Gordon Bullard LLC and associated companies.

**THINK BOLLARD - THINK BULLARD**

[sales@gordonbullard.com](mailto:sales@gordonbullard.com) / [www.bullardbollards.com](http://www.bullardbollards.com) / 1-877-964-4646

991 South Gull Lake Dr Richland, MI 49083 USA

**RELATED PRODUCTS:**



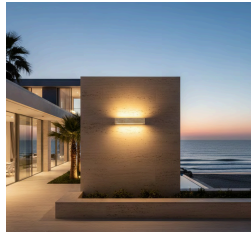
**Part Number:**

BB-7176-800-ML  
BB-7176-1500-ML  
BB-7176-1100-ML  
BB-7176-1800-ML



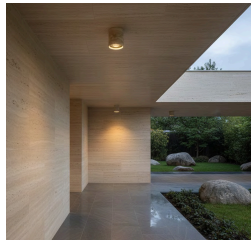
**Part Number:**

BB-7572-ML  
BB-7573-ML



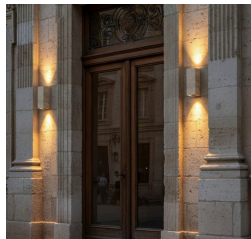
**Part Number:**

BB-7530-ML



**Part Number:**

BB-7099-ML  
BB-7106-ML



**Part Number:**

BB-7666-ML  
BB-7667-ML



Due to the dynamic nature of lighting products and the associated technologies, luminaire data on all specification sheets is subject to change at the discretion of Gordon Bullard LLC and associated companies.

**THINK BOLLARD - THINK BULLARD**

[sales@gordonbullard.com](mailto:sales@gordonbullard.com) / [www.bullardbollards.com](http://www.bullardbollards.com) / 1-877-964-4646

991 South Gull Lake Dr Richland, MI 49083 USA