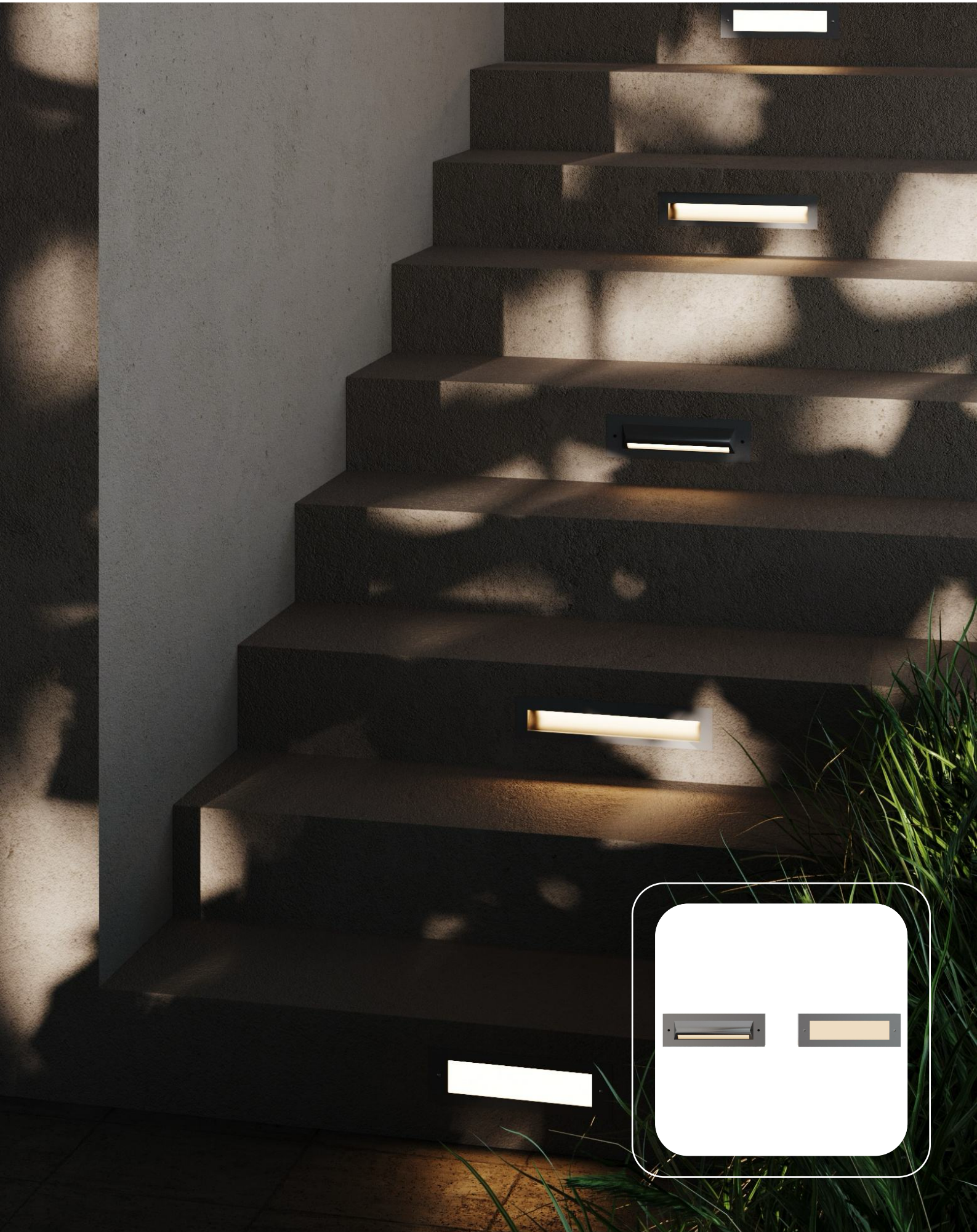




**BULLARD
BOLLARDS**
Think Bollard Think Bullard

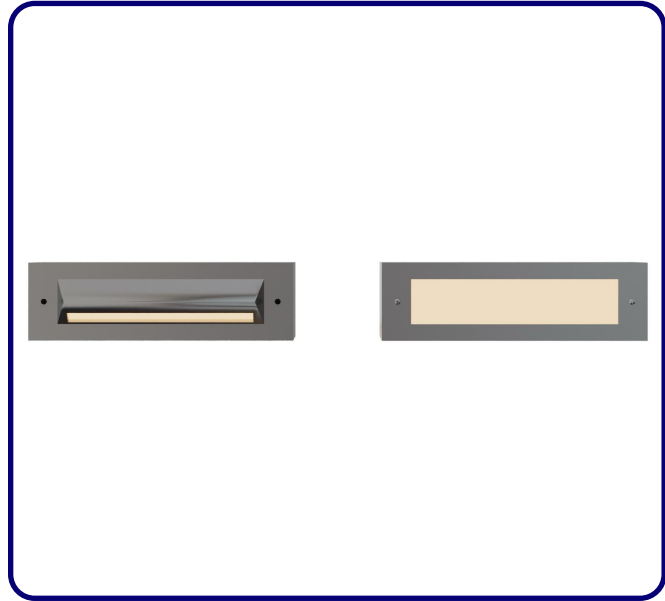
SKYRAY
Recessed Wall Luminaires
Stair / Pathway





FIXTURE TYPE: _____

PROJECT NAME: _____



GENERAL INFORMATION:

The SKYRAY Recessed Wall Luminaire is a durable LED fixture designed for stairways and pathways. Made from die-cast dark gray powder-coated aluminum with optional stainless steel covers, it offers efficient 110–277V illumination with a CRI of 80. Featuring a UV-stable, fireproof lens and IP65/IK09 protection, SKYRAY ensures reliable performance and modern style in Sanded Dark Gray, Sanded Black, or Sanded Silver Gray finishes.

FIXTURE TYPE:

Recessed Wall Luminaires - Stair/Pathway

LIGHTING:

LED



VOLTAGE:

110-277V



MATERIAL:

12# Die-casting powder coated aluminum

COVER:

D1BE2817: 12# Die-casting aluminum
D1BD4232: Stainless Steel 316L#

LENS:

UVstop & Fireproof PC

CRI:

80

IP RATING:

IP 65



IK RATING:

IK 09

FINISHING:

Sanded Dark Gray
Sanded Black
Sanded Silver Gray

sales@gordonbullard.com
www.bullardbollards.com
1-877-964-4646



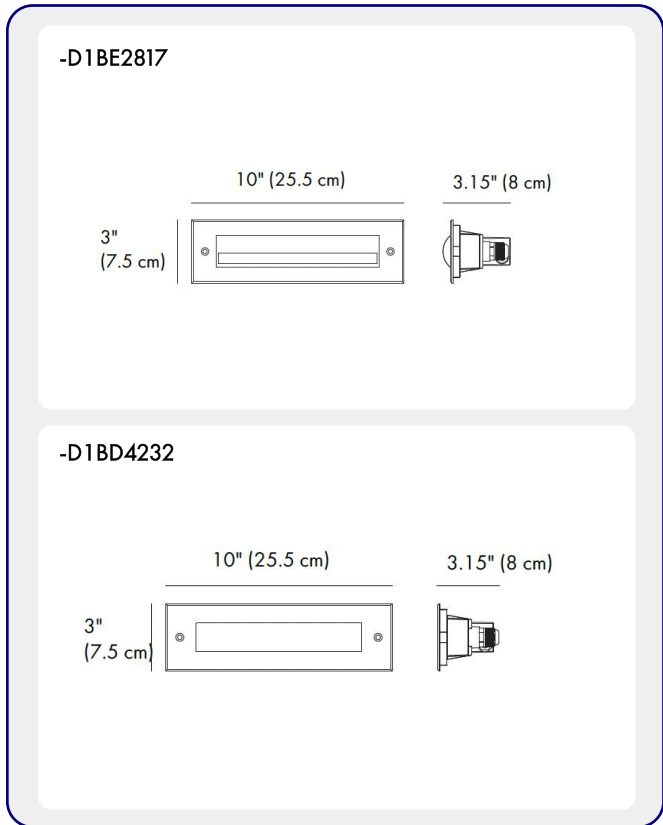
991 South Gull Lake Dr
Richland, MI 49083
USA



FIXTURE TYPE: _____

PROJECT NAME: _____

NOTES:



HOW TO ORDER:

CODE:

Example:
CODE: BB-SKR-KPG-RWL-XXX-XXX-XXX-XXX-XXX-XX

BB-SKR-KPG-RWL-
D1BE2817-K30-
KAP7037-DIM

1 MODELS:

CODE -D1BE2817

DIMENSIONS:

Length - L: 10" (25.5 cm)
Height - H: 3" (7.5 cm)
Depth - P: 3.15" (8 cm)

LIGHT SOURCE:

LED / 28 x 0.15W / 220 mA / 82 lm / 110-277V

CODE -D1BD4232

DIMENSIONS:

Length - L: 10" (25.5 cm)
Height - H: 3" (7.5 cm)
Depth - P: 3.15" (8 cm)

LIGHT SOURCE:

LED / 42 x 0.09W / 220 mA / 226 lm / 110-277V

2 CCT OPTIONS:

-K30 3000K
-CUS Custom on request*

3 FINISH OPTIONS:

-KAP7037 Sanded Dark Gray
-RAL 9005 Sanded Black
-RAL9022 Sanded Silver Gray

4 DIMMING OPTIONS:

-DIM 1-10V
-PWM Pulse Width Modulation
-DALI DALI (Digital Addressable Lighting Interface)

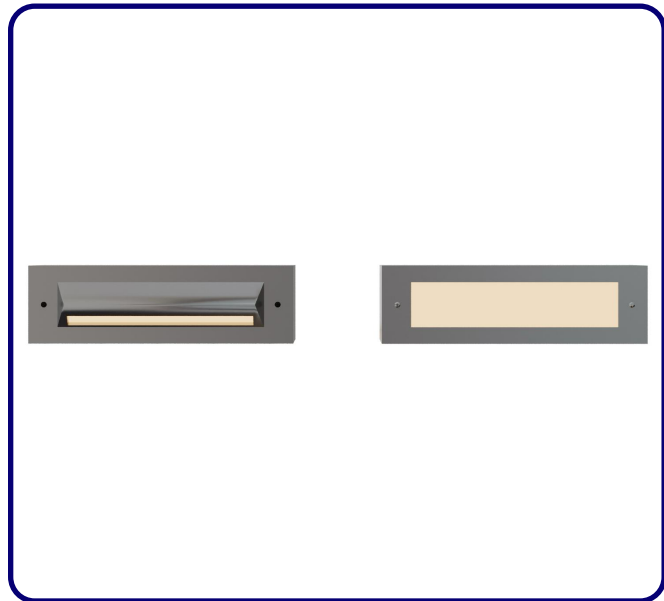




FIXTURE TYPE: _____

PROJECT NAME: _____

NOTES:



HOW TO ORDER:

CODE:

Example:
CODE: BB-SKR-KPG-RWL-XXX-XXX-XXX-XXX-XXX-XX

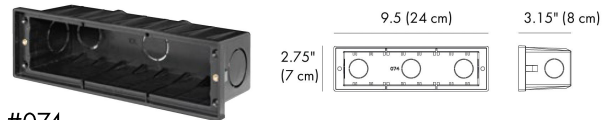
BB-SKR-KPG-RWL-
D1BE2817-K30-
KAP7037-DIM

5 MOUNTING SLEEVE CHARACTERISTIC:



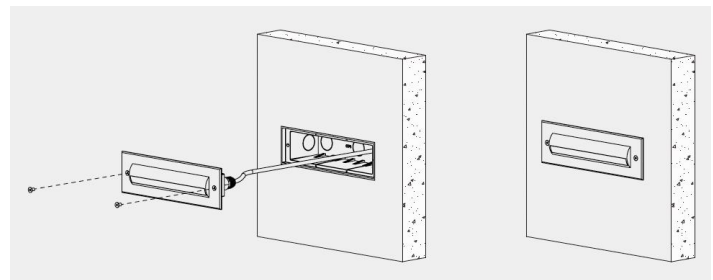
- The above picture - the supporting plate "A1" and "A2" are used for preventing deformation of the sleeve during the construction installation process.
- Please remove the supporting plate "A1" and "A2" from the mountingsleeve before the lamp installation.

6 RECESSED SLEEVE: (included)

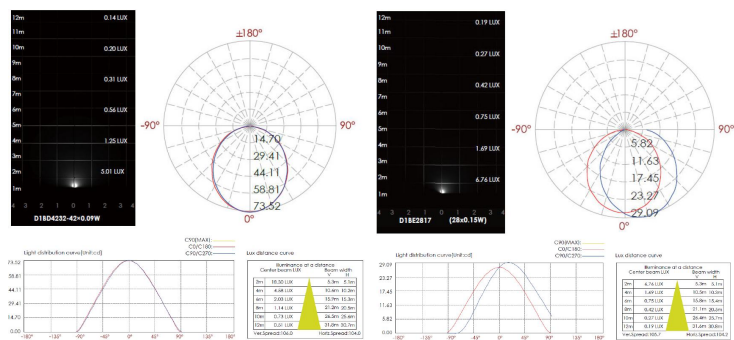


#074

7 DIAGRAM OF INSTRUCTION:



8 PHOTOMETRIC INFO:



sales@gordonbullard.com
www.bullardbollards.com
1-877-964-4646



991 South Gull Lake Dr
Richland, MI 49083
USA