



**BULLARD  
BOLLARDS**  
Think Bollard Think Bullard

**VIZO**  
**Recessed Wall Luminaires**  
**Stair / Pathway**





FIXTURE TYPE: \_\_\_\_\_

PROJECT NAME: \_\_\_\_\_



**GENERAL INFORMATION:**

The VIZO Recessed Wall Luminaire is a high-quality LED fixture designed for stair and pathway lighting. Constructed from die-cast powder-coated aluminum, it combines strength and style with a UV-stable, fireproof PC lens for consistent illumination. Operating on 110–277V, VIZO is rated IP65 for weather resistance and IK10 for impact protection, with an IP67 copper and nickel-coated cable gland ensuring durability. Featuring a stainless steel recessed sleeve, it's available in Sanded Dark Gray, Sanded Black, and Sanded Silver Gray finishes, offering reliable performance and refined design for modern architectural spaces.

**FIXTURE TYPE:**

Recessed Wall Luminaires - Stair/Pathway

**LIGHTING:**

LED



**VOLTAGE:**

110-277V



**MATERIAL:**

12# Die-casting powder coated aluminum

**LENS:**

UVstop & Fireproof PC

**CABLE GLAND:**

IP67 Copper and nicked coated

**RECESSED SLEEVE:**

Stainless steel 178#

**IP RATING:**

IP 65



**IK RATING:**

IK 10

**FINISHING:**

Sanded Dark Gray

Sanded Black

Sanded Silver Gray

sales@gordonbullard.com

www.bullardbollards.com

1-877-964-4646



991 South Gull Lake Dr

Richland, MI 49083

USA



FIXTURE TYPE: \_\_\_\_\_

PROJECT NAME: \_\_\_\_\_

NOTES:

**-D1HA1034**

3.94" (10 cm)      3.37" (8.5 cm)

3.94"  
(10 cm)

---

**-D1HB1034**

3.94" (10 cm)      3.37" (8.5 cm)

3.94"  
(10 cm)



**HOW TO ORDER: \_\_\_\_\_ CODE: \_\_\_\_\_**

Example:  
CODE: BB-VZ-KPG-RWL-XXX-XXX-XXX-XXX-XXX-XX

BB-VZ-KPG-RWL-  
D1HA1034-K30-  
KAP7037-DIM

**1 MODELS:**

**CODE -D1HA1034**

DIMENSIONS:  
 Length - L: 3.94" (10 cm)  
 Height - H: 3.94" (10 cm)  
 Depth - P: 3.37" (8.5 cm)

LIGHT SOURCE:  
 LED / 10 x 0.5W / 110 mA / 124.6 lm / 110-277V / CRI 80

**CODE -D1HB1034**

DIMENSIONS:  
 Length - L: 3.94" (10 cm)  
 Height - H: 3.94" (10 cm)  
 Depth - P: 3.37" (8.5 cm)

LIGHT SOURCE:  
 LED / 10 x 0.5W / 230 mA / 130 lm / 110-277V / CRI 80

**2 CCT OPTIONS:**

-K30      3000K  
 -CUS      Custom on request\*

**3 FINISH OPTIONS:**

-KAP7037    Sanded Dark Gray  
 -RAL 9005    Sanded Black  
 -RAL9022    Sanded Silver Gray

**4 DIMMING OPTIONS:**

-DIM      1-10V  
 -PWM      Pulse Width Modulation  
 -DALI      DALI (Digital Addressable Lighting Interface)

sales@gordonbullard.com  
 www.bullardbollards.com  
 1-877-964-4646



991 South Gull Lake Dr  
 Richland, MI 49083  
 USA

FIXTURE TYPE: \_\_\_\_\_

PROJECT NAME: \_\_\_\_\_

NOTES:



**HOW TO ORDER:**

**CODE:**

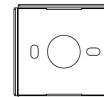
Example:  
CODE: BB-GL-KPG-RWL-XXX-XXX-XXX-XXX-XXX-XX

BB-VZ-KPG-RWL-  
D1HA1034-K30-  
KAP7037-DIM

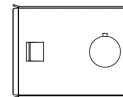
**5 RECESSED SLEEVE: (included)**



2.6" (2.66")



3.3" (8.5 cm)



2.55"  
(6.55 cm)

092#

**6 FEATURES:**

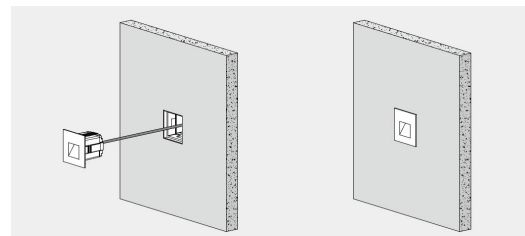


• Front cover without screws

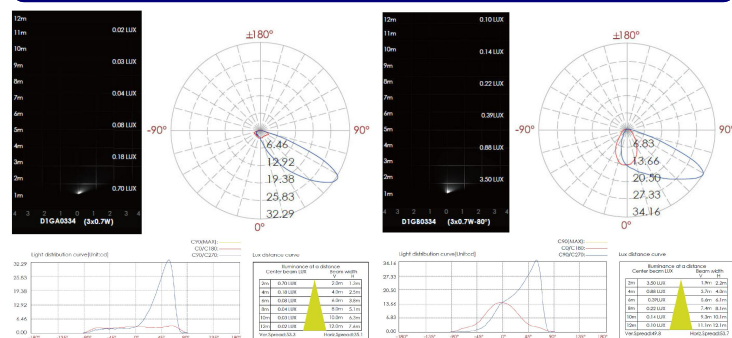


• Use the high-strength clips for fixation.  
(please refer remark 1)

**7 DIAGRAM OF INSTRUCTION:**



**8 PHOTOMETRIC INFO:**



sales@gordonbullard.com  
www.bullardbollards.com  
1-877-964-4646



991 South Gull Lake Dr  
Richland, MI 49083  
USA