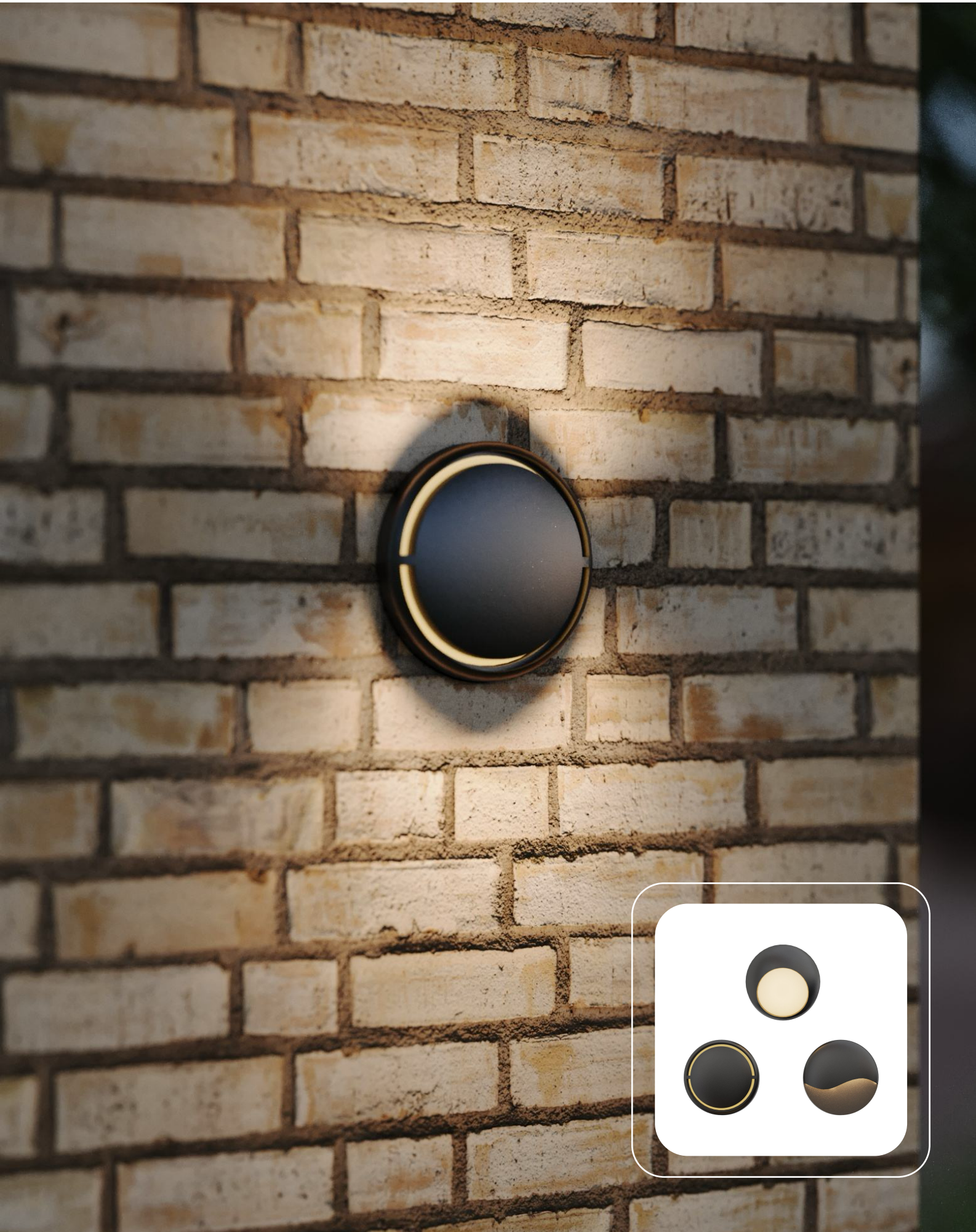




**BULLARD
BOLLARDS**
Think Bollard Think Bullard

FLUSH
Recessed Wall Luminaires
Round / Square



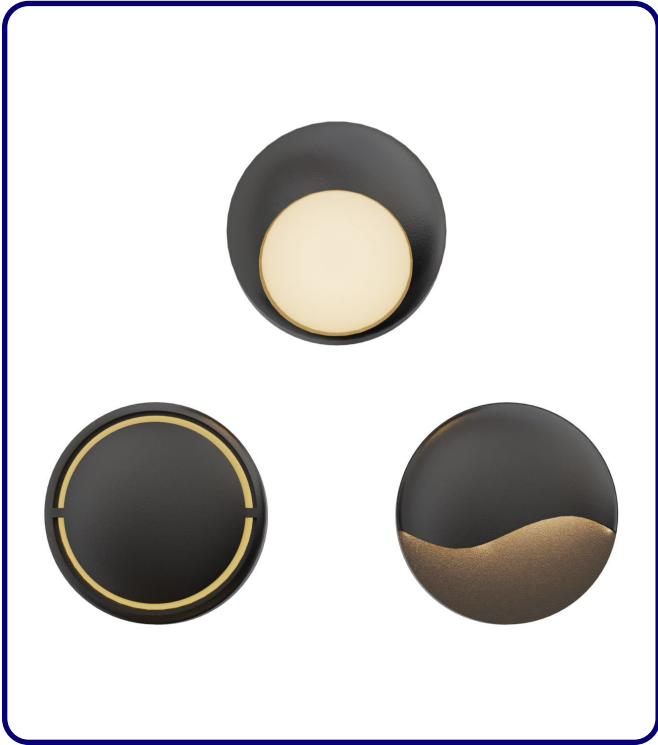


**BULLARD
BOLLARDS**
Think Bollard Think Bullard

**CODE:
BB-FLH-KPG-RWL**

FIXTURE TYPE: _____

PROJECT NAME: _____



*CABLE GLAND - IP66

GENERAL INFORMATION:

The FLUSH Recessed Wall Luminaire is a sleek and durable LED fixture designed for round and square wall applications. Made from die-cast powder-coated aluminum, it delivers efficient 110–277V illumination through a UV-stable, fireproof PC lens (T=2.5mm). With a load capacity over 2000 kg and IP65/IK08/IK07 protection, it ensures long-lasting performance in both residential and commercial settings. Featuring an IP66 cable gland for added durability, FLUSH is available in Sanded Dark Gray, Sanded Black, and Sanded White finishes, blending modern design with reliable functionality for architectural lighting.

FIXTURE TYPE:

Recessed Wall Luminaires - Round / Square

LIGHTING:

LED

LED

VOLTAGE:

110-277V

110-277V

MATERIAL:

12# Die-casting powder coated aluminum

LENS:

UVstop & Fireproof PC T=2.5mm

RECESSED SLEEVE:

PC/ABS ALLOYS 216#

LOADING CAPACITY:

>2000kg

IP RATING:

IP 65

IP65

IK RATING:

IK 07 / IK 08

FINISHING:

Sanded Dark Gray
Sanded Black
Sanded White
Sanded Bronze

sales@gordonbullard.com
www.bullardbollards.com
1-877-964-4646



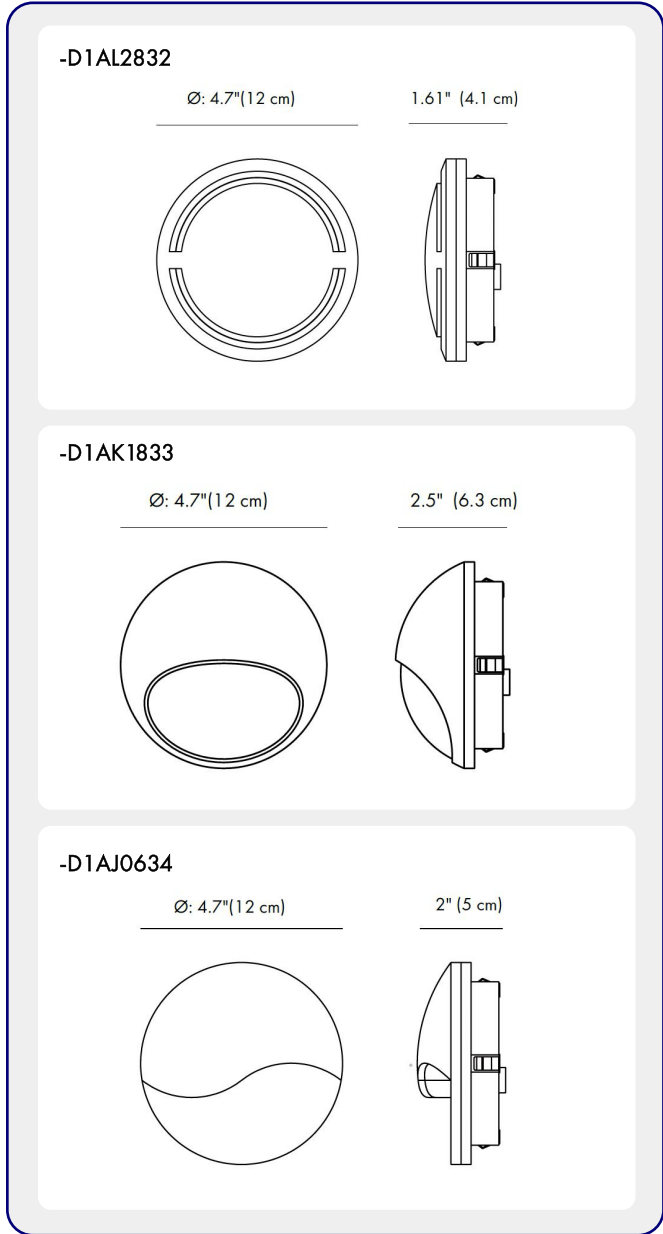
991 South Gull Lake Dr
Richland, MI 49083
USA



FIXTURE TYPE: _____

PROJECT NAME: _____

NOTES:



HOW TO ORDER:

CODE:

Example:
CODE: BB-FLH-KPG-RWL-XXX-XXX-XXX-XXX-XXX-XX

BB-FLH-KPG-RWL-
D1AL2832-K30-
KAP7037-DIM

1 MODELS:

CODE -D1AL2832

DIMENSIONS:

Diameter - Ø: 4.7" (12 cm)
Depth - P: 1.61" (4.1 cm)

LIGHT SOURCE:

LED / 28 x 0.1W / 125 mA / 18 lm / 110-277V / IK 08

CODE -D1AK1833

DIMENSIONS:

Diameter - Ø: 4.7" (12 cm)
Depth - P: 2.5" (6.3 cm)

LIGHT SOURCE:

LED / 18 x 0.15W / 105 mA / 157 lm / 110-277V / IK 08

CODE -D1AJ0634

DIMENSIONS:

Diameter - Ø: 4.7" (12 cm)
Depth - P: 2" (5 cm)

LIGHT SOURCE:

LED / 6 x 0.5W / 100 mA / 48 lm / 110-277V / IK 07

2 CCT OPTIONS:

-K30 3000K
-CUS Custom on request*

3 FINISH OPTIONS:

-KAP7037 Sanded Dark Gray
-RAL 9005 Sanded Black
-RAL9003 Sanded White
-KAP7008 Sanded Bronze

4 DIMMING OPTIONS:

-DIM 1-10V
-PWM Pulse Width Modulation
-DALI DALI (Digital Addressable Lighting Interface)

sales@gordonbullard.com
www.bullardbollards.com
1-877-964-4646



991 South Gull Lake Dr
Richland, MI 49083
USA

FIXTURE TYPE: _____

PROJECT NAME: _____

NOTES:



*CABLE GLAND - IP66

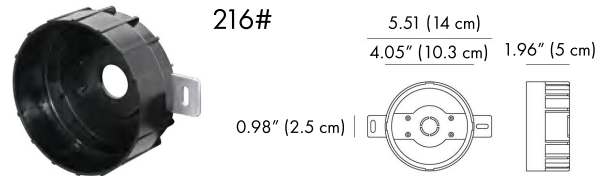
HOW TO ORDER:

CODE:

Example:
CODE: BB-FLH-KPG-RWL-XXX-XXX-XXX-XXX-XXX-XX

BB-FLH-KPG-RWL-
D1AL2832-K30-
KAP7037-DIM

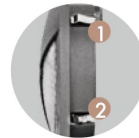
5 RECESSED SLEEVE: (included)



6 FEATURES:

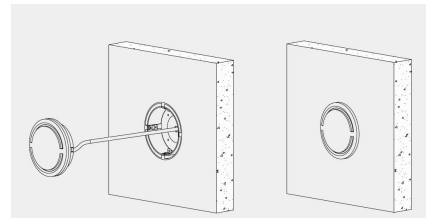


Front cover without screws

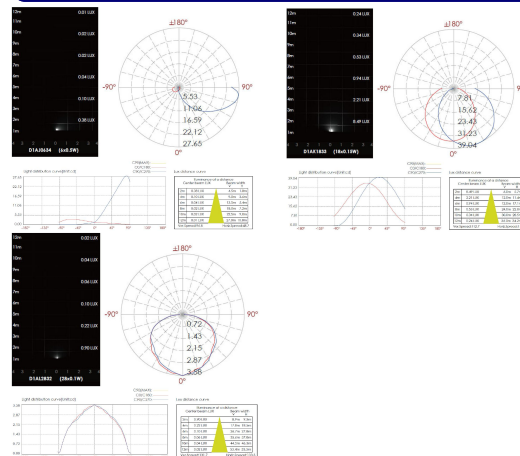


Use the high-strength clips for installation and fixation. (please refer remark 1 & 2)

7 DIAGRAM OF INSTRUCTION:



8 PHOTOMETRIC INFO:



sales@gordonbullard.com
www.bullardbollards.com
1-877-964-4646



991 South Gull Lake Dr
Richland, MI 49083
USA